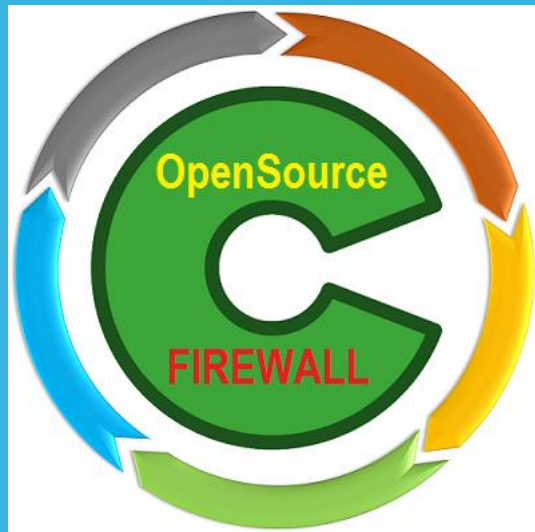


# OPEN SOURCE CIRCLE

ENTERPRISE GRADE SOLUTIONS - OPEN SOURCE WAY...



# INTRODUCTION

## Welcome to Open Source Circle

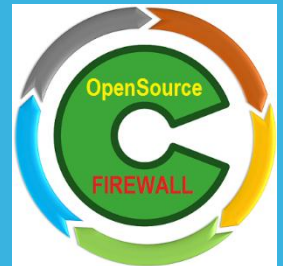
*Connecting Open Source Way ...*

We at Open Source Circle gives you IT infrastructure Solutions for:

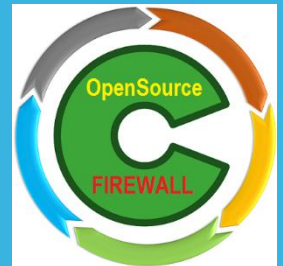
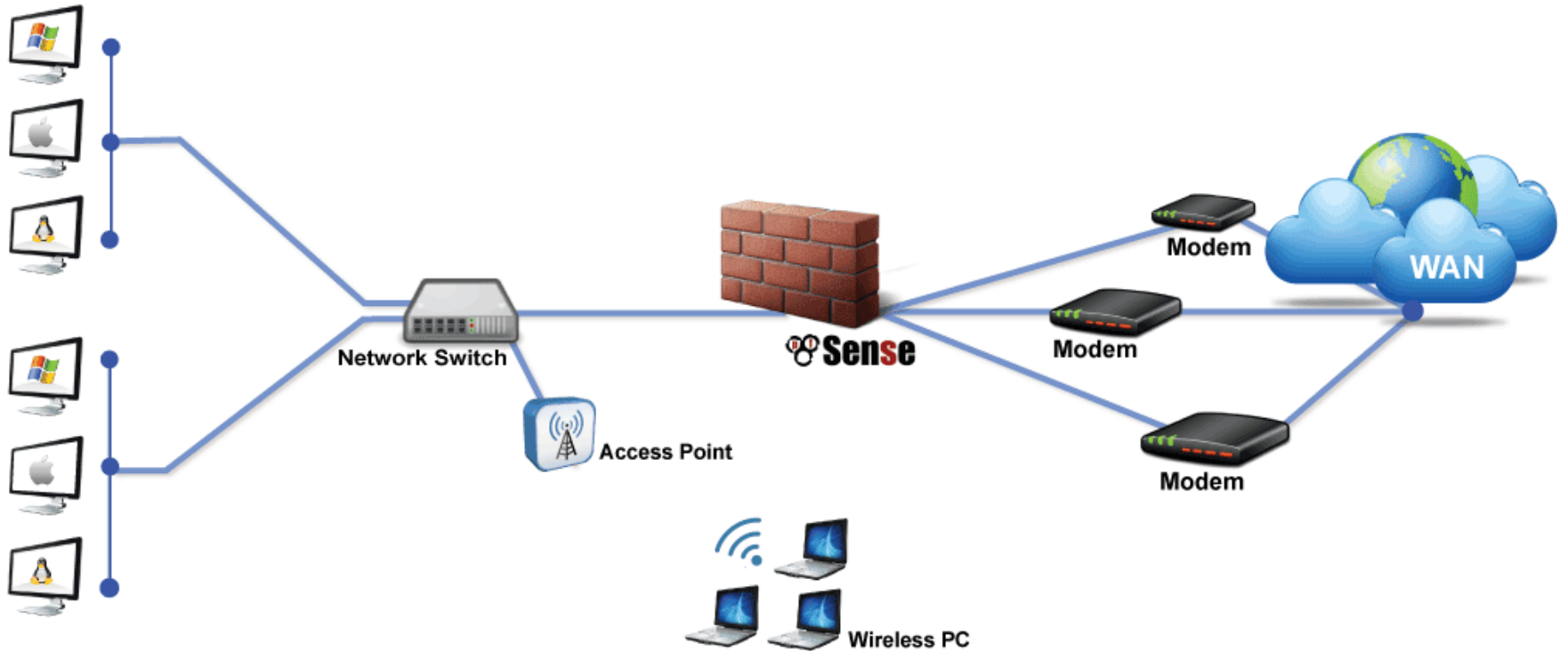
- Email
- Firewall
- Groupware
- Security

and support and other IT solutions based on open source to various corporate clients across the world.

We believe that open source is the best way to serve clients and society providing a true value services on a platform that blends into their setup of diverse natures and requirements.

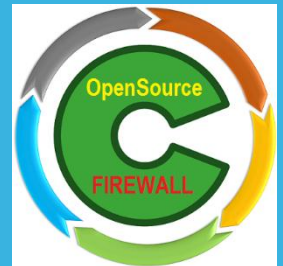


# OPEN SOURCE FIREWALL – ENTERPRISE GRADE



# WHY OPEN SOURCE FIREWALL

- **Enterprise Grade Firewall and UTM Features**
- **World's most trusted open source network security solution**
- **Total Cost Of Ownership**
- **Unlimited licenses and No User and Devices Limit**
- **No application level restriction**
- **Updates Free Forever**
- **No Subscription Fees**
- **A superior hardware with performance tuned**
- **Lowest Price to Performance Ratio**
- **Support 24x7 and No-Vendor lock-in**
- **Open Source software and hardware - support widely available**



# OPEN SOURCE FIREWALL FEATURES

## APPLICATIONS

- VPN Server
- High Availability
- Load Balancing
- Traffic Shaping
- Captive Portal
- UTM Device
- Firewall / Router
- DNS / DHCP Server
- IDS / IPS
- Transparent Caching Proxy
- Web Content Filter
- And more ...

## FEATURES

### Firewall and Router

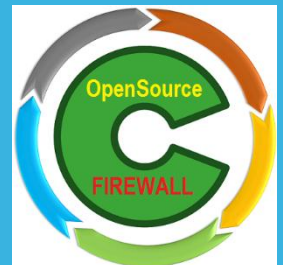
- Stateful Packet Inspection (SPI)
- GeolIP blocking
- Anti-Spoofing
- Time based rules
- Connection limits
- Dynamic DNS
- Reverse proxy
- Captive portal guest network
- Supports concurrent IPv4 and IPv6
- NAT mapping (inbound/outbound)
- VLAN support (802.1q)
- Configurable static routing
- IPv6 network prefix translation
- IPv6 router advertisements
- Multiple IP addresses per interface
- DHCP server
- DNS forwarding
- Wake-on-LAN
- PPPoE Server

### VPN

- IPsec and OpenVPN
- Site-to-site and remote access VPN support
- SSL encryption
- VPN client for multiple operating systems
- L2TP/IPsec for mobile devices
- Multi-WAN for failover
- IPv6 support
- Split tunneling
- Multiple tunnels
- VPN tunnel failover
- NAT support
- Automatic or custom routing
- Local user authentication or RADIUS/LDAP

### Intrusion Prevention System

- Snort-based packet analyzer
- Layer 7 application detection
- Multiple rules sources and categories
- Emerging threats database
- IP blacklist database
- Pre-set rule profiles
- Per-interface configuration
- Suppressing false positive alerts
- Deep Packet Inspection (DPI)
- Optional open-source packages for application blocking



# OPEN SOURCE FIREWALL FEATURES

## Enterprise Reliability

- Optional multi-node High Availability Clustering
- Multi-WAN load balancing
- Automatic connection failover
- Bandwidth throttling
- Traffic shaping wizard
- Reserve or restrict bandwidth based on traffic priority
- Fair sharing bandwidth
- User data transfer quotas

## User Authentication

- Local user and group database
- User and group-based privileges
- Optional automatic account expiration
- External RADIUS authentication
- Automatic lockout after repeated attempts

## Proxy and Content Filtering

- HTTP and HTTPS proxy
- Non Transparent or Transparent caching proxy
- Domain/URL filtering
- Anti-virus filtering
- SafeSearch for search engines
- HTTPS URL and content screening
- Website access reporting
- Domain Name blacklisting (DNSBL)
- Usage reporting for daily, monthly, etc.

---

## ADMINISTRATION

---

### Configuration

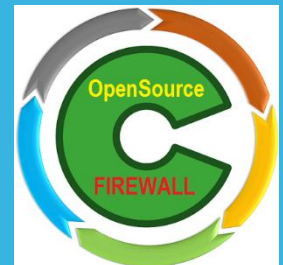
- Web-based configuration
- Setup wizard for initial configuration
- Remote web-based administration
- Customizable dashboard
- Easy configuration backup/restore
- Configuration export/import
- Encrypted automatic backup to Netgate server (with pfSense Gold)
- Variable level administrative rights
- Multi-language support
- Simple updates
- Forward-compatible configuration
- Serial console for shell access and recovery options

### System Security

- Web interface security protection
- CSRF protection
- HTTP Referer enforcement
- DNS Rebinding protection
- HTTP Strict Transport Security
- Frame protection
- Optional key-based SSH access

### Reporting & Monitoring

- Dashboard with configurable widgets
- Local logging
- Remote logging
- Local monitoring graphs
- Real-time interface traffic graphs
- SNMP monitoring
- Notifications via web interface, SMTP, or Growl
- Hardware monitoring
- Networking diagnostic tools



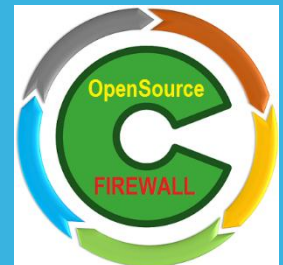
# SOURCE FIREWALL MODELS

## OSC-FW2100 Firewall Appliance

- The OSC-FW2100 comes with Dual 1Gbps Ethernet ports
- Max Active Connections 500,000

## OSC-FW4100 Firewall Appliance

- The OSC-FW4100 comes with Four x 1Gbps Ethernet ports
- Max Active Connections 1,80,000



# SOURCE FIREWALL MODELS

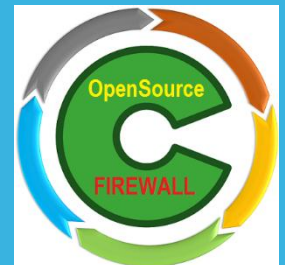
## OSC-FW6100 Firewall Appliance

- The OSC-FW2100 comes with Six x 1Gbps Ethernet ports
- Max Active Connections 50,00,000



## OSC- Customized Firewall Appliance Available as per requirements

- OSC-Firewall comes with 2-16 ports x 1/10 Gbps Ethernet ports & SFP ports
- Max Active Connections 50,00,000 - 500,00,000





# OPEN SOURCE CIRCLE

For more information contact:

+91-959 505 8558

Open [SourceCircle.com@gmail.com](mailto:SourceCircle.com@gmail.com)

<https://www.OpenSourceCircle.com>

