



# OSC-FW4100 Firewall Appliance

*Big value, attractive appearance*

## INTERNET SECURITY

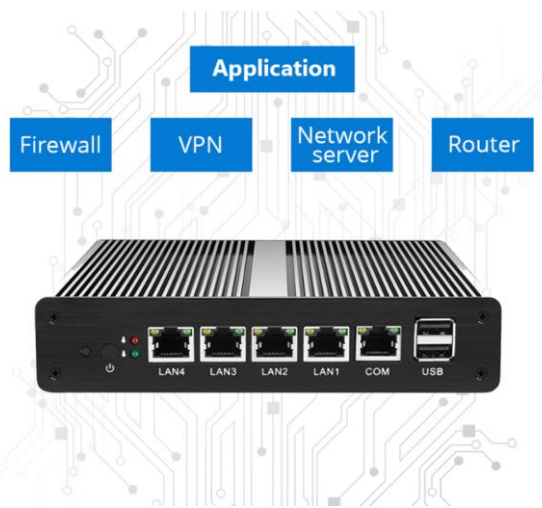
Firewall protection keeps your IT infrastructure and computer environment safe from intrusion by hackers while it is connected to the internet.

## NETWORK PROTECTION

In computer networks, firewalls block or allow network traffic, based on a set of predefined or dynamic rules and policies. They protect networks and computers against intrusion from potentially dangerous black-hats as well as from attacks that might enable them to take over the devices and misuse them for malicious purposes.

## ENTERPRISE GRADE FIREWALLS

Secure networks - With thousands of enterprises using Open Source firewall, it is rapidly becoming the world's most trusted open source network security solution.



- OSC-FW4100 Firewall is a cost-effective, state-of-the-art, intel®-based, pfSense® Security Gateway appliance.
- The OSC-FW4100 comes with four 1Gbps Ethernet ports, enabling maximum throughput exceeding 100Mbps.
- Intel® SoC and DDR3L RAM facilitate low-power consumption while maintaining performance.
- The OSC-FW4100 comes in a lightweight anodized aluminum case. It's small sized footprint allows it to be easily tucked away, but you'll be proud to show it off.

The OSC-FW4100 pfSense Security Gateway Appliance can be configured as a firewall, LAN or WAN router, VPN appliance, DHCP Server, DNS Server, and IDS/IPS with optional packages to deliver a high performance, high throughput front-line security appliance at an excellent price in a compact footprint. With preloaded pfSense software, the OSC-FW4100 is a fast networking security solution unencumbered by traditional annual contracts, licensing fees, or artificial limitations. Flexibility is built in to the OSC-FW4100 with upgrade options such as a m.2 SATA SSD, LTE cellular, or mPCIe Wi-Fi.

## Easy To Use

- Pre-loaded with pfSense software, ready to use right out of the box.
- Small form-factor, so it fits about anywhere.
- Easy GUI management. Manage pfSense settings through our web-based GUI.



technology  
consulting



# Service Features and Benefits



## LOW TOTAL COST OF OWNERSHIP

- No artificial limits or add-ons required to make your system fully functional.
- No additional usage or feature based pricing. No preset limits on users, firewall rules, or IPsec tunnels.
- Low power requirements to save money and be more eco-friendly.

## GROWS WITH YOU

- Flexible configuration and support for VPN, load balancing, reporting and monitoring.
- Simple package management system to add powerful functions and features.

## SECURE REMOTE ACCESS

- Connect via encrypted Virtual Private Networks (VPN) between offices, let mobile workers connect securely, or connect to the Cloud!
- Use the built-in Amazon VPC Wizard to easily establish VPN connections with Amazon EC2 cloud instances.

# Technical Specifications

<b>CPU</b>	Intel Celeron 4xJ1900   2xJ1800
<b>CPU Cores</b>	4 2
<b>Memory Options</b>	2GB/4GB/8GB Non ECC DDR3L 1333/1600MHz 1.35V
<b>Storage Options</b>	30GB/60GB/120GB mSATA SSD and/or 2.5 inch SSD/HDD
<b>Network Interfaces</b>	4x 1GbE on RJ45 (LAN+WAN) 10/100/1000Mbps BaseT LAN
<b>Wi-Fi Module (Optional)</b>	802.11.b/g/n, half Mini PCI-E Wi-Fi
<b>USB Ports</b>	2x 2.0 USB
<b>Display Ports</b>	VGA
<b>Console Port</b>	1x RJ45/RS232 Port
<b>Max Active Connections</b>	10,80,000 (1.8 Million)
<b>Power</b>	External ITE P/S AC/DC 100-240V, 50-60 Hz, 12V 3.33A, threaded barrel connector
<b>Case</b>	Small case vented anodized aluminum available in black
<b>Dimensions</b>	175x126x37mm
<b>Cooling</b>	Passive
<b>Operating Temperature</b>	0°C (32°F) to 60°C (140°F)
<b>Weight</b>	1.25kg
<b>Hardware Warranty</b>	12 Months
<b>Certifications</b>	CE, FCC, RoHS, UL
<b>Power Consumption</b>	Input AC 100-240V, 50-60 Hz   Output DC 12V 5A 20W (idle)
<b>Support Options</b>	Professional, Enterprise, and Enterprise Plus

## SERVICES AVAILABLE

- **Technical Support**
- **Design, Installation and Setup**
- **Maintenance**
- **Application Support**
- **Hardware Support**
- **Guaranteed Warranty**

technology consulting

Contact:

## TECHNICAL SUPPORT

- 24x7 Support available
- Remote Support
- Call
- Chat

## ZERO DOWNTIME

24x7 Support for depending on Support options

- On-Call Support
- Monthly/Yearly
- 4/8/24/72Hrs. RMA

## TURNKEY SOLUTIONS

Managed Service Providers (MSP) / Managed Security Service Provider (MSSP)  
 On-Premises Appliance for SMB SOHO, Small Networks, Small Branch Office, Remote Employees  
 Many VPN Connections, Outsourcing / Office Remote User VPN  
 IoT Security Endpoint  
 Commercial Applications  
 Network Tap  
 IPMI Port Firewall  
 VPN Endpoint

For more information on any of our products or services please visit us on the Web at:

[www.OpenSourceCircle.com](http://www.OpenSourceCircle.com)

Call: +91-959 505 8558

OpenSourceCircle.com@gmail.com